

## EHTX — TEXEL/TEXEL

*Note: the following sections in this chapter are intentionally left blank: AD 2.7, AD 2.8, AD 2.11, AD 2.14, AD 2.19, AD 2.20, AD 2.21.*

### EHTX AD 2.1 AERODROME LOCATION INDICATOR AND NAME

#### EHTX — TEXEL/Texel

### EHTX AD 2.2 AERODROME GEOGRAPHICAL AND ADMINISTRATIVE DATA

1	<b>ARP co-ordinates and site at AD</b>	53°06'55"N 004°50'01"E
2	<b>Direction and distance from (city)</b>	3.5 NM NNE from Den Burg.
3	<b>Elevation/reference temperature</b>	+2 ft AMSL/19.5°C.
4	<b>Geoid undulation at AD ELEV PSN</b>	Not AVBL.
5	<b>MAG VAR/annual change</b>	0°E(2010)/8'E.
6	<b>AD operator, postal address, telephone, telefax, email, AFS, website</b>	Post: Texel Airport Ltd. Postweg 120 1795 JS De Cocksdorp, Texel The Netherlands  Tel: +31 (0)222 311267 +31 (0)222 311673  Fax: +31 (0)222 311250  Email: <a href="mailto:info@texelairport.nl">info@texelairport.nl</a> URL: <a href="http://www.texelairport.nl">http://www.texelairport.nl</a>
7	<b>Types of traffic permitted (IFR/VFR)</b>	VFR
8	<b>Remarks</b>	<div style="margin-bottom: 5px;"> <span style="display: inline-block; width: 1em; height: 1em; background-color: black; margin-right: 5px;"></span>           Aerodrome available for national and international civil air traffic with all types of aircraft up to 6000 kg AUW and gliders.         </div> <div> <span style="display: inline-block; width: 1em; height: 1em; background-color: black; margin-right: 5px;"></span>           Aerodrome authority can admit aircraft with higher AUW.         </div>

### EHTX AD 2.3 OPERATIONAL HOURS

1	<b>AD operator</b>	MON-SAT: 0700-1800 (0600-1700) SUN and HOL: 0900-1800 (0800-1700) or end of UDP, whichever is earlier. Outside AD OPR HR: O/R.
2	<b>Customs and immigration</b>	Customs: AD OPR HR. Immigration: NA.
3	<b>Health and sanitation</b>	NA
4	<b>AIS briefing office</b>	NA
5	<b>ATS reporting office (ARO)</b>	Competent ATS unit: ARO Schiphol, see <a href="#">EHAM AD 2.3</a> .
6	<b>MET briefing office</b>	Self briefing, AD OPR HR.
7	<b>ATS</b>	NA
8	<b>Fuelling</b>	AD OPR HR.
9	<b>Handling</b>	NA
10	<b>Security</b>	NA
11	<b>De-icing</b>	NA
12	<b>Remarks</b>	NIL

**EHTX AD 2.4 HANDLING SERVICES AND FACILITIES**

1	<b>Cargo-handling facilities</b>	NIL
2	<b>Fuel/oil types</b>	100LL, Jet A1 / -.
3	<b>Fuelling facilities/capacity</b>	100LL: 50 000 litres, Jet A1: 50 000 litres.
4	<b>De-icing facilities</b>	NIL
5	<b>Hangar space for visiting aircraft</b>	Limited AVBL.
6	<b>Repair facilities for visiting aircraft</b>	AVBL O/R.
7	<b>Remarks</b>	NIL

**EHTX AD 2.5 PASSENGER FACILITIES**

1	<b>Hotels</b>	10 rooms at the aerodrome. Sufficient accommodation in Den Burg and De Koog.
2	<b>Restaurants</b>	At the aerodrome.
3	<b>Transportation</b>	Taxi (on request), bus and bicycle.
4	<b>Medical facilities</b>	First aid AVBL.
5	<b>Bank and post office</b>	AVBL in Den Burg.
6	<b>Tourist office</b>	AVBL in Den Burg.
7	<b>Remarks</b>	NIL

**EHTX AD 2.6 RESCUE AND FIRE FIGHTING SERVICES**

1	<b>AD category for fire fighting</b>	CAT 3.
2	<b>Rescue equipment</b>	2 fire trucks.
3	<b>Capability for removal of disabled aircraft</b>	Information not AVBL.
4	<b>Remarks</b>	NIL

**EHTX AD 2.9 SURFACE MOVEMENT GUIDANCE AND CONTROL SYSTEM AND MARKINGS**

1	<b>Use of aircraft stand ID signs, TWY guide lines and visual docking/parking guidance system at aircraft stands</b>	NIL
2	<b>RWY and TWY markings and LGT</b>	RWY: white cones; TWY: blue cones.
3	<b>Stop bars</b>	NIL
4	<b>Remarks</b>	NIL

**EHTX AD 2.10 AERODROME OBSTACLES**

For obstacles at and in the vicinity of the aerodrome see [AD 2.EHTX-ADC](#).

**EHTX AD 2.12 RUNWAY PHYSICAL CHARACTERISTICS**

Designations RWY NR	True BRG	Dimensions of RWY (m)	Strength (PCN) and surface of RWY and SWY	THR co-ordinates RWY end co- ordinates THR GUND	THR elevation and highest elevation of TDZ of precision APCH RWY
1	2	3	4	5	6
04	036°	1115 x 40	6000 kg <sup>1)2)3)</sup> grass	Not AVBL	NA
22	216°	1115 x 40	6000 kg <sup>1)2)3)</sup> grass	Not AVBL	NA

13	126°	630 x 40	6000 kg <sup>1)2)3)</sup> grass	Not AVBL	NA
31	306°	630 x 40	6000 kg <sup>1)2)3)</sup> grass	Not AVBL	NA

Designations RWY NR	Slope of RWY-SWY	SWY dimensions (m)	CWY dimensions (m)	Strip dimensions (m)	OFZ
1	7	8	9	10	11
04	NA	NA	NA	NA	NA
22	NA	NA	NA	NA	NA
13	NA	NA	NA	NA	NA
31	NA	NA	NA	NA	NA

#### Remarks

12

Bearing strength.

MAX tyre pressure 0.56 MPa.

When surface conditions so permit, the aerodrome manager can admit aircraft with a higher AUW and a higher tyre pressure.

#### EHTX AD 2.13 DECLARED DISTANCES

RWY Designator	TORA (m)	TODA (m)	ASDA (m)	LDA (m)	Remarks
1	2	3	4	5	6
04	1115	1115	1115	1115	NIL
22	1115	1115	1115	1115	NIL
13	630	630	630	630	NIL
31	630	630	630	630	NIL

#### EHTX AD 2.15 OTHER LIGHTING, SECONDARY POWER SUPPLY

1	<b>ABN/IBN location, characteristics and hours of operation</b>	Information not AVBL.
2	<b>LDI location and LGT Anemometer location and LGT</b>	LDI and anemometer: 40 m N from helicopter landing area.
3	<b>TWY edge and centre line lighting</b>	NIL
4	<b>Secondary power supply Switch-over time</b>	NIL
5	<b>Remarks</b>	NIL

#### EHTX AD 2.16 HELICOPTER LANDING AREA

1	<b>Co-ordinates TLOF or THR of FATO Geoid undulation</b>	NIL
2	<b>TLOF and/or FATO elevation m/ft</b>	NIL
3	<b>TLOF and FATO area dimensions, surface, strength, marking</b>	NIL
4	<b>True BRG of FATO</b>	NIL
5	<b>Declared distance available</b>	NIL
6	<b>APCH and FATO lighting</b>	NIL
7	<b>Remarks</b>	Helicopter landing area 400 m N from THR RWY 04, lighted.

#### EHTX AD 2.17 ATS AIRSPACE

1	<b>Designation and lateral limits</b>	NA
2	<b>Vertical limits</b>	NA
3	<b>Airspace classification</b>	G
4	<b>ATS unit call sign Language(s)</b>	NA
5	<b>Transition altitude</b>	IFR: 3000 ft AMSL; VFR: 3500 ft AMSL.
6	<b>Remarks</b>	NIL

## EHTX AD 2.18 ATS COMMUNICATION FACILITIES

Service designation	Call sign	Frequency	Hours of operation	Remarks
1	2	3	4	5
Aerodrome information	Texel Radio	119.300 MHz	See <a href="#">EHTX AD 2.3</a>	NIL

## EHTX AD 2.22 FLIGHT PROCEDURES

### 1 VFR FLIGHT PROCEDURES AND REGULATIONS

**Note:** for visual approach chart and traffic circuits see [AD 2.EHTX-VAC](#).

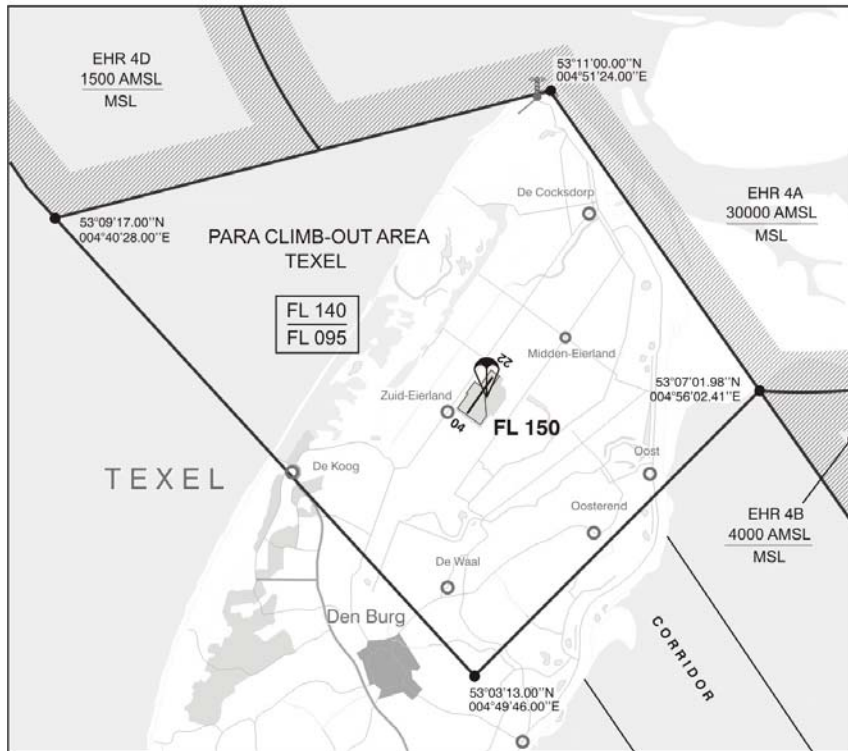
- The minimum approach altitude is 1502 ft AMSL (1500 ft AAL).
- The circuit altitude is 1002 ft AMSL (1000 ft AAL).
- The visual traffic circuit must be carried out within the lateral limits of the circuit area associated with the runway in use.
- Joining and leaving the circuit shall take place in accordance with the rules of the standard circuit (see [ENR 1.2 paragraph 8](#)), except as described in items 8, 9 and 10.
- The circuit area may not be overflown below an altitude of 1502 ft AMSL (1500 ft AAL). Built-up areas and dunes shall be avoided as much as possible.
- Marked areas must be avoided.
- **RWY 22:** after take-off climb on runway heading. At orange circuit marker make lefthand turn to crosswind and leave the circuit as indicated in the chart.
- **RWY 04:** after take-off climb to 1000 ft on runway heading and leave the circuit as indicated in the chart.
- **RWY 31:** leave the circuit as indicated in the chart.
- For motorised civil air traffic above the natural area Waddensee the following applies:
  - Flights below 1500 ft AGL are not allowed;
  - Only when the cloud base < 1500 ft AGL or the flight visibility < 8 km, flights are allowed above 1000 ft AGL within the corridors depicted on chart [ENR 6-5.3](#) (see [ENR 5.6 paragraph 1](#)).
  - If weather conditions permit, pass the Texel coast at 1500 ft AMSL or above.
  - Descend to circuit altitude after passing the villages Oosterend and Oost.

## EHTX AD 2.23 ADDITIONAL INFORMATION

### 1 CAUTIONS AND ADDITIONAL INFORMATION

- Parachute jumping may take place as stated in [ENR 5.5](#) and/or as promulgated by NOTAM. To accommodate parachute jumping from MAX FL 140 para climb-out area Texel is established in TRA 10.



Area	Lateral Limits	Upper limit Lower limit
Para climb-out area Texel	53°09'17.00"N 004°40'28.00"E; 53°11'00.00"N 004°51'24.00"E; 53°07'01.98"N 004°56'02.41"E; 53°03'13.00"N 004°49'46.00"E; to point of origin.	<u>FL 140</u> FL 095



Grass cutting may take place at irregular times.

The grass runway in use has been equipped with THR identification lights. These THR identification lights are situated at the corners of the grass runway in use and have the character of a white flashing light (when visibility is 5 km or below).

#### EHTX AD 2.24 CHARTS RELATED TO AN AERODROME

Type of chart	Page
Aerodrome chart	AD 2.EHTX-ADC  <a href="#">../graphics/eAIP/EH-AD-2.EHTX-ADC.pdf</a>
Visual approach chart	AD 2.EHTX-VAC  <a href="#">../graphics/eAIP/EH-AD-2.EHTX-VAC.pdf</a>